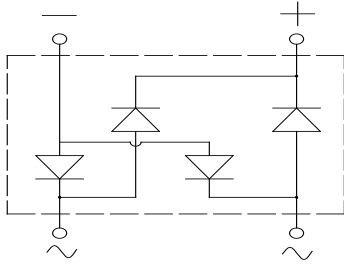
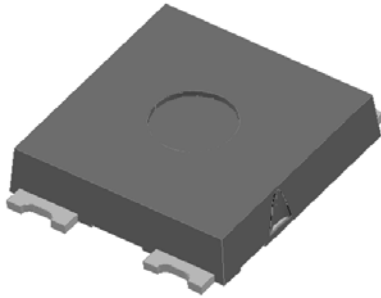


## Bridge Rectifiers



### Features

- Ideal for automated placement
- High surge current capability
- Meets MSL level 1, per J-STD-020, LF maximum peak of 260 °C

### Typical Applications

General purpose use in AC/DC bridge full wave rectification for SMPS, lighting ballaster, adapter, battery charger, home appliances, office equipment, and telecommunication applications.

### Mechanical Data

- **Package:** YBS4  
Molding compound meets UL 94 V-0 flammability rating, RoHS-compliant, Halogen-free
- **Terminals:** Tin plated leads, solderable per J-STD-002 and JESD22-B102
- **Polarity:** As marked on body

### ■ Maximum Ratings (T<sub>a</sub>=25°C Unless otherwise specified)

PARAMETER	SYMBOL	UNIT	YBSL20005	YBSL2001	YBSL2002	YBSL2004	YBSL2006	YBSL2008	YBSL2010
Device marking code			YBSL20005	YBSL2001	YBSL2002	YBSL2004	YBSL2006	YBSL2008	YBSL2010
Repetitive peak reverse voltage	VRRM	V	50	100	200	400	600	800	1000
Average rectified output current @60Hz sine wave, R-load, T <sub>c</sub> =110°C	I <sub>O</sub>	A	2.0						
Surge(non-repetitive)forward current @60HZ sine wave, 1 cycle, T <sub>j</sub> =25°C	IFSM	A	75						
Current squared time @1ms≤t<8.3ms T <sub>j</sub> =25°C, Rating of per diode	I <sup>2</sup> t	A <sup>2</sup> s	23						
Storage temperature	T <sub>stg</sub>	°C	-55 ~+150						
Junction temperature	T <sub>j</sub>	°C	-55 ~+150						

### ■ Electrical Characteristics (T<sub>a</sub>=25°C Unless otherwise specified)

PARAMETER	SYMBOL	UNIT	TEST CONDITIONS	YBSL20005	YBSL2001	YBSL2002	YBSL2004	YBSL2006	YBSL2008	YBSL2010
Maximum instantaneous forward voltage drop per diode	V <sub>F</sub>	V	IFM=1.0A	1.0						
			IFM=2.0A	1.1						
Maximum DC reverse current at rated DC blocking voltage per diode @ VRM=VRRM	I <sub>RRM</sub>	μA	T <sub>j</sub> =25°C	5						
			T <sub>j</sub> =125°C	500						



# YBSL20005 THRU YBSL2010

## ■ Thermal Characteristics (T<sub>a</sub>=25°C Unless otherwise specified)

PARAMETER		SYMBOL	UNIT	YBSL20005	YBSL2001	YBSL2002	YBSL2004	YBSL2006	YBSL2008	YBSL2010
Thermal Resistance	Between Junction and Ambient,	R <sub>θJ-A</sub>	°C/W	32						
	Between Junction and Lead	R <sub>θJ-L</sub>		15						
	Between Junction and Case	R <sub>θJ-C</sub>		9						

## ■ Ordering Information (Example)

PREFERRED P/N	PACKING CODE	UNIT WEIGHT(g)	MINIMUM PACKAGE(pcs)	INNER BOX QUANTITY(pcs)	OUTER CARTON QUANTITY(pcs)	DELIVERY MODE
YBSL20005-YBSL2010	F1	Approximate 0.40	2500	5000	35000	13" reel

## ■ Characteristics(Typical)

FIG1: I<sub>o</sub>-T<sub>c</sub> Curve

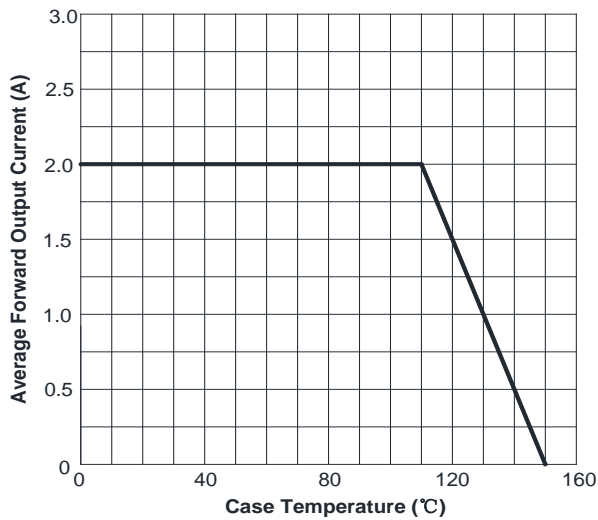


FIG2: Surge Forward Current Capability

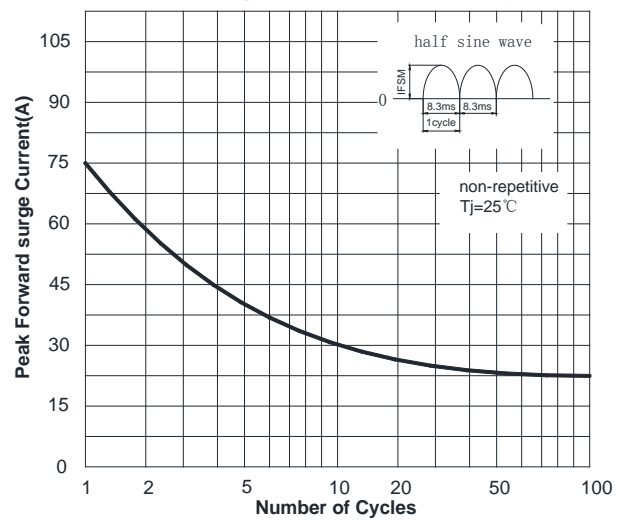


FIG3: Forward Voltage

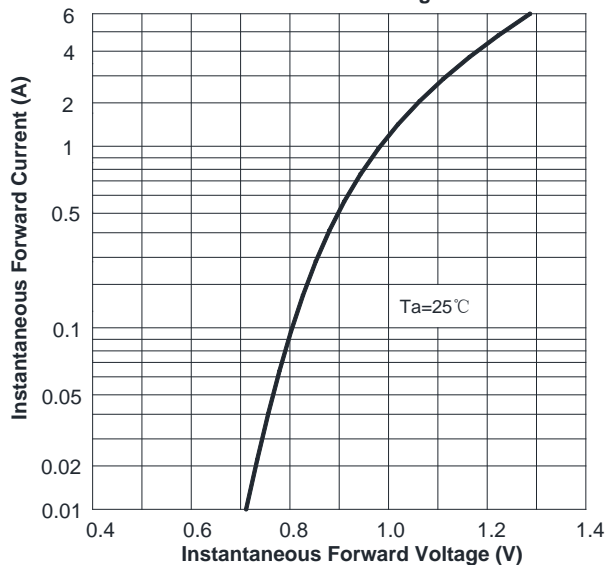
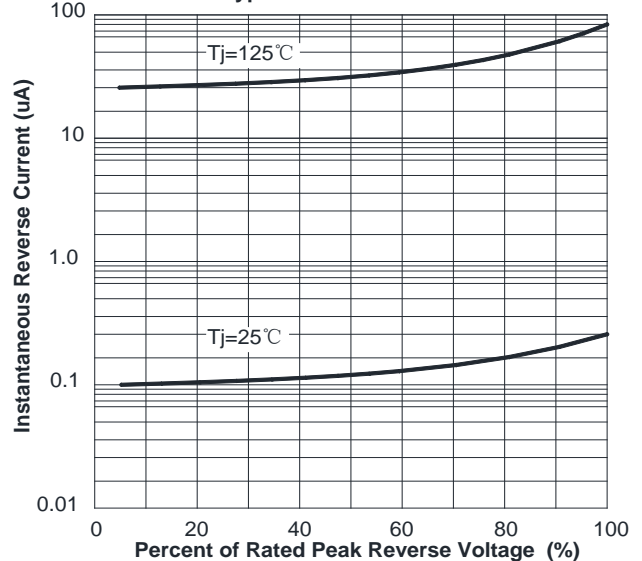


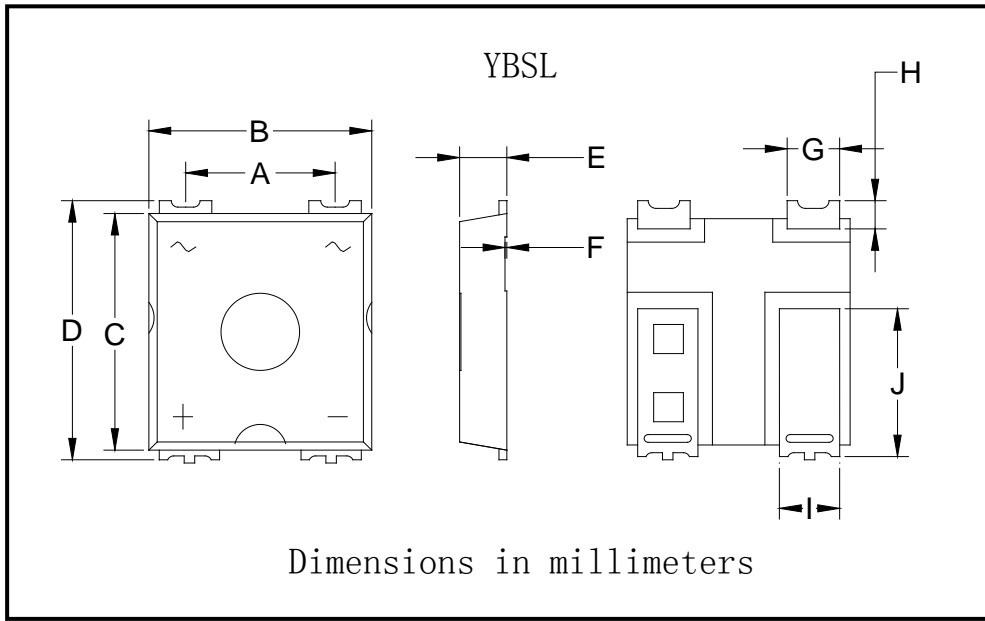
FIG4: Typical Reverse Characteristics





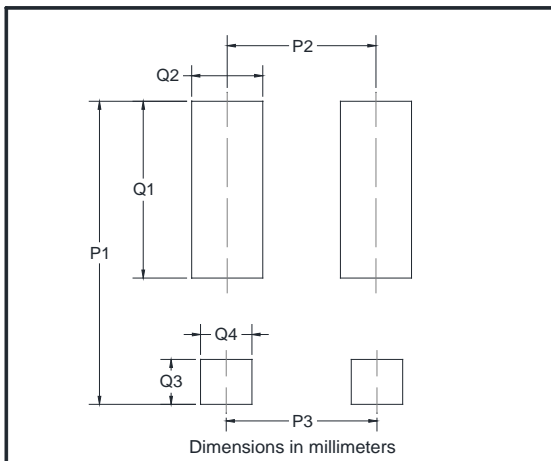
# YBSL20005 THRU YBSL2010

## ■ Outline Dimensions



YBS4		
Dim	Min	Max
A	5.60	5.80
B	8.30	8.70
C	9.00	9.40
D	10.15	10.55
E	1.70	1.90
F	0.02	0.12
G	1.90	2.10
H	0.20	1.00
I	2.20	2.40
J	5.80	6.20
K	5.30	5.50

## ■ Suggested pad layout



Dim	Min
P1	10.80
P2	5.40
P3	5.70
Q1	6.30
Q2	2.50
Q3	1.60
Q4	1.80



## YBSL20005 THRU YBSL2010

---

### Disclaimer

The information presented in this document is for reference only. Yangzhou Yangjie Electronic Technology Co., Ltd. reserves the right to make changes without notice for the specification of the products displayed herein to improve reliability, function or design or otherwise.

The product listed herein is designed to be used with ordinary electronic equipment or devices, and not designed to be used with equipment or devices which require high level of reliability and the malfunction of which would directly endanger human life (such as medical instruments, transportation equipment, aerospace machinery, nuclear-reactor controllers, fuel controllers and other safety devices), Yangjie or anyone on its behalf, assumes no responsibility or liability for any damages resulting from such improper use of sale.

This publication supersedes & replaces all information previously supplied. For additional information, please visit our website [http:// www.21yangjie.com](http://www.21yangjie.com) , or consult your nearest Yangjie's sales office for further assistance.